

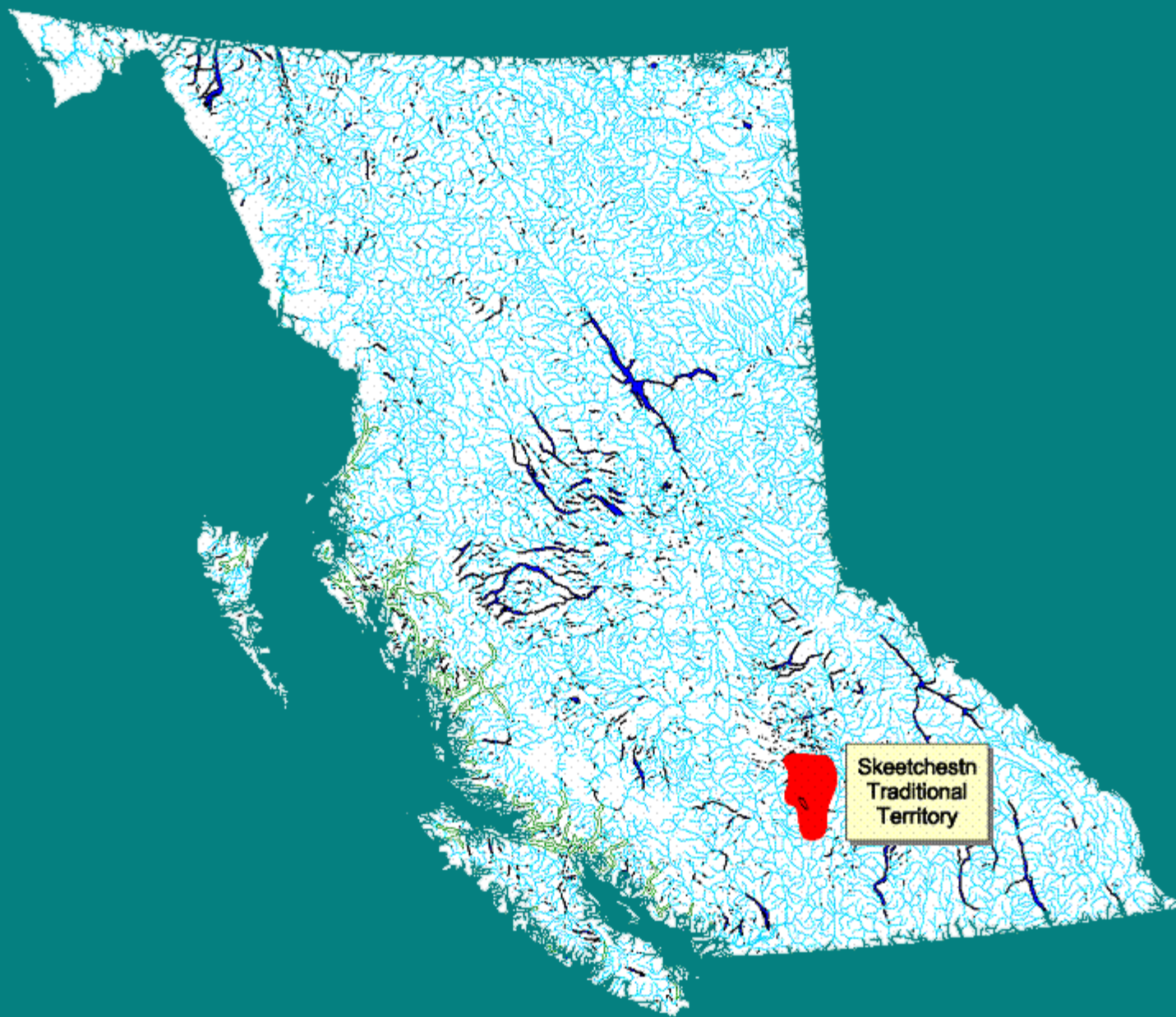
Skeetchestn Environmental Food Contaminants Project



VISION STATEMENT

The Skeetchestn Indian Band is involved in the sustainable management of eco-systems and the forest, range and water resources including community values for wildlife, fisheries and plants within Skeetchestn Traditional Territory.

The Skeetchestn Indian Band will be a prosperous and self-sufficient community, with involvement in all phases of planning of lands and resource management within their Traditional Territories, funded by primary resource and land use fees.

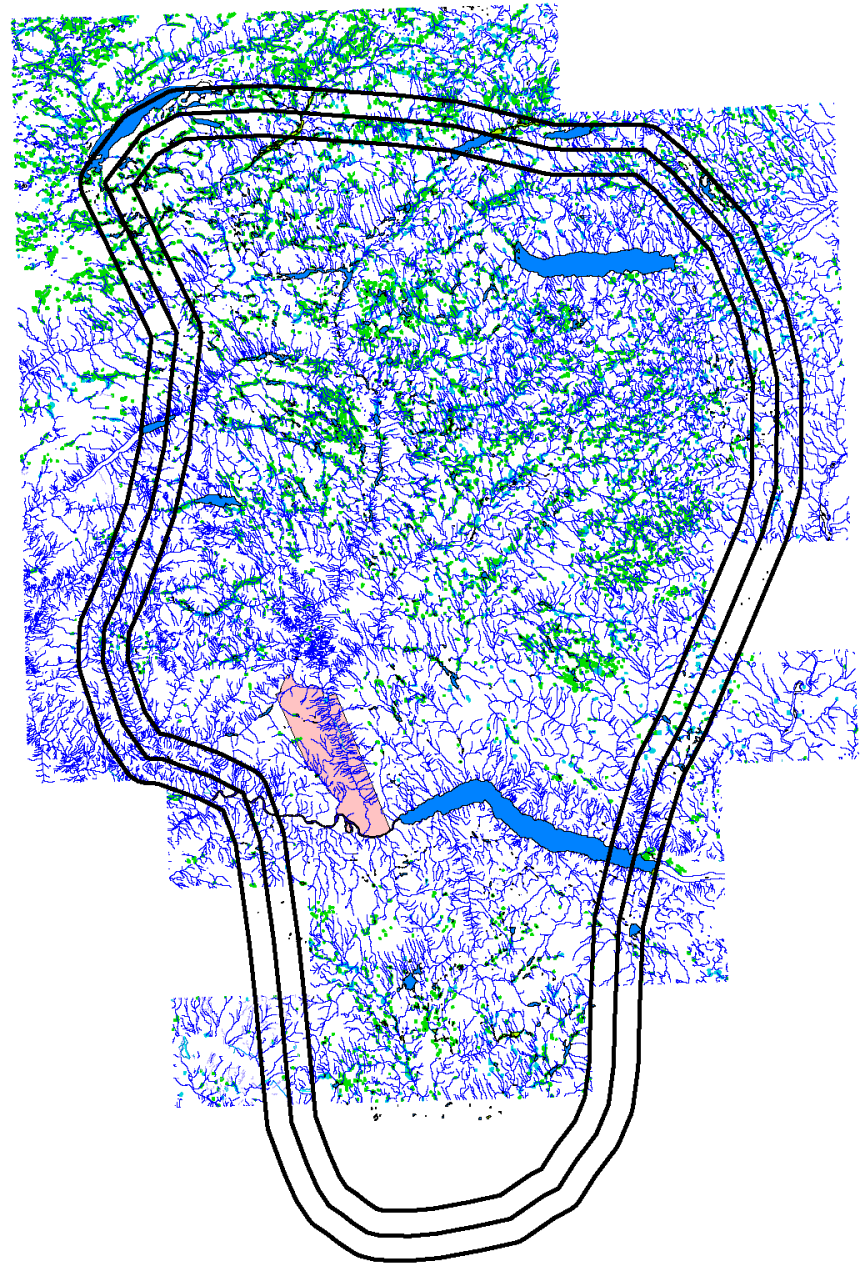


Skeetchestn Traditional Territory

Over 709,000 Ha in area
6480 square miles

Lakes and Wetlands
18,221 Ha

Flowing Water
9560 Km



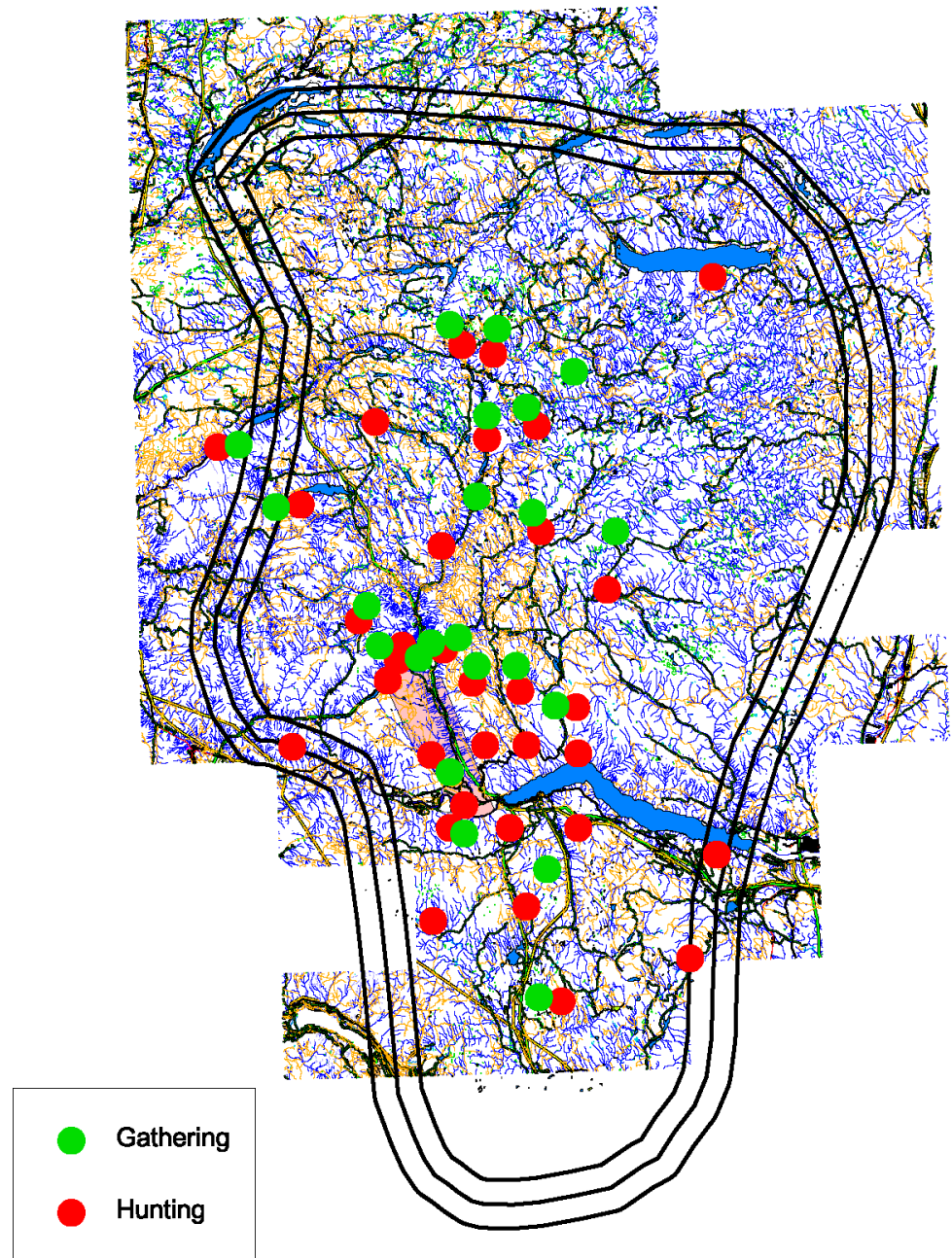
Hunting and Gathering for Sustainability

Approximately 60 community members were surveyed as to their use and consumption of both game and wild plants as both medicine and food sources.

Game made up anywhere from 25-100% of household meat supply within the community and is hunted throughout the Traditional Territory.

There are also approximately 60-70 different species of plants including a number of root crops and various berries collected and utilized extensively throughout the community.

www.skeetchestn.ca

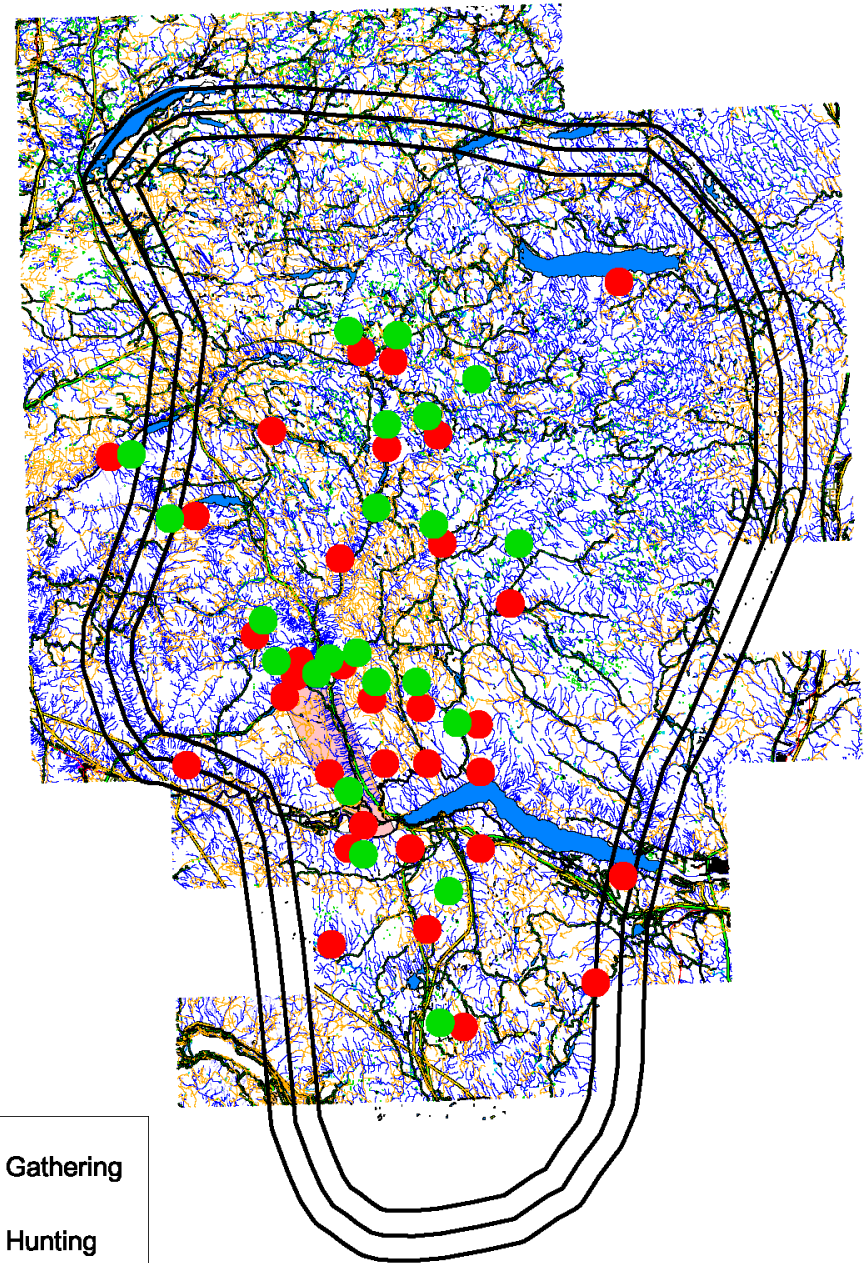
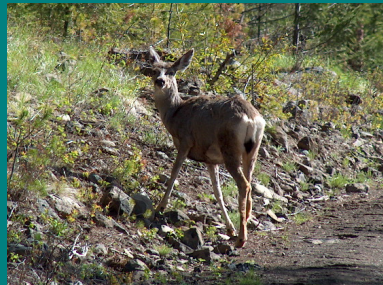
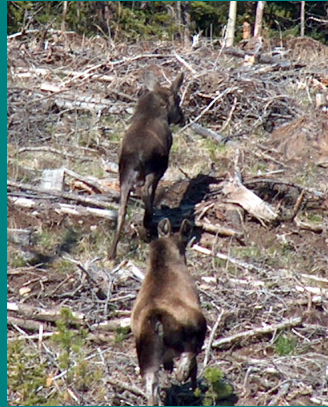


Hunting and Gathering for Sustainability

Wild Game

8 types including

Deer
Moose
Grouse
Bear
Rabbit
Squirrels
Muskrats
Beavers



Hunting and Gathering for Sustainability

Berries

14 types including

Soapberries

Saskatoon

Chokecherry

Strawberries

Raspberries

Blue Berries

Huckleberries

Gooseberries

Blackberries

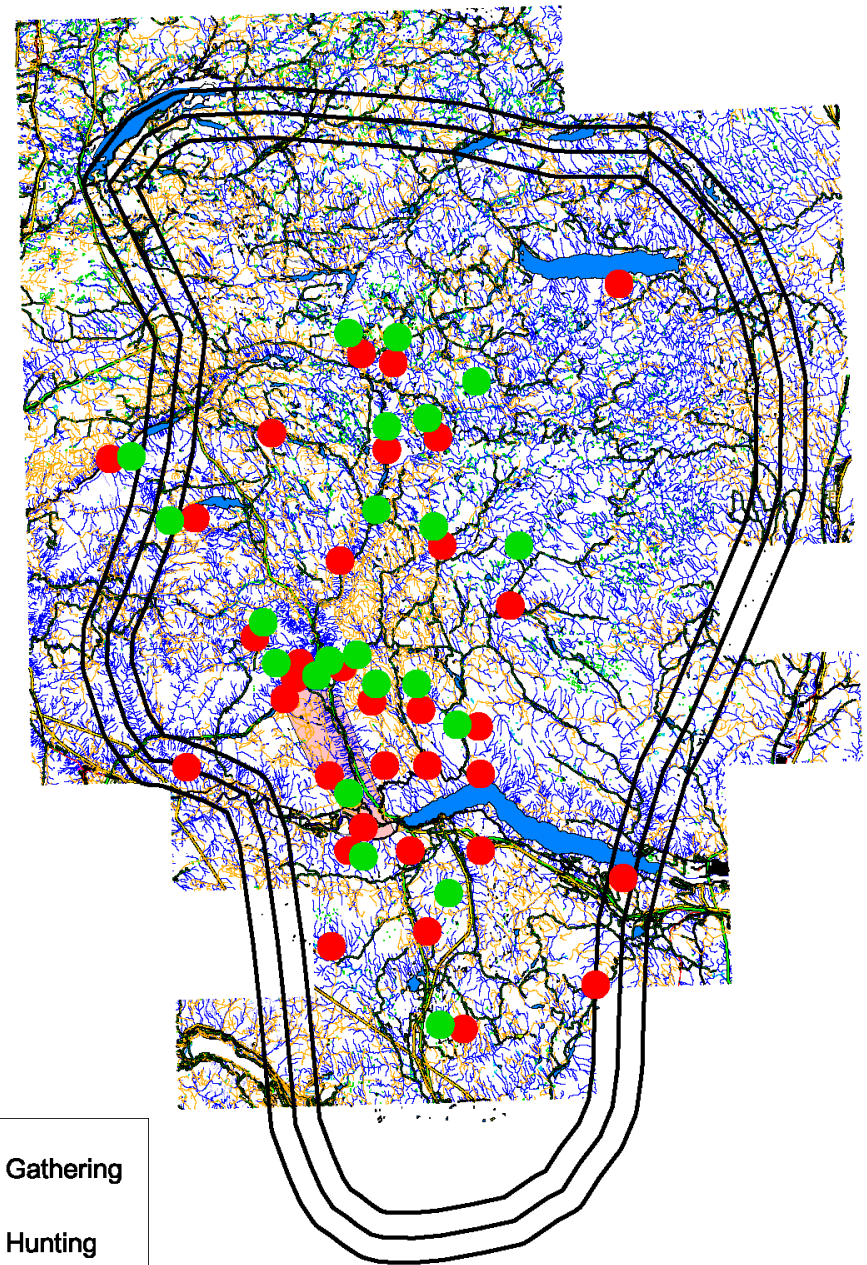
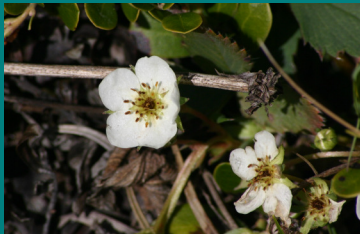
Red Currents

Elderberry (Blue)

Black Currents

High Bush Cranberries

High/low bush blueberries



Hunting and Gathering for Sustainability Vegetable

10 types including

Wild Onion

Potato

Wild Asparagus

Cactus

Celery

Wild Rhubarb

Mushrooms (white, pine)

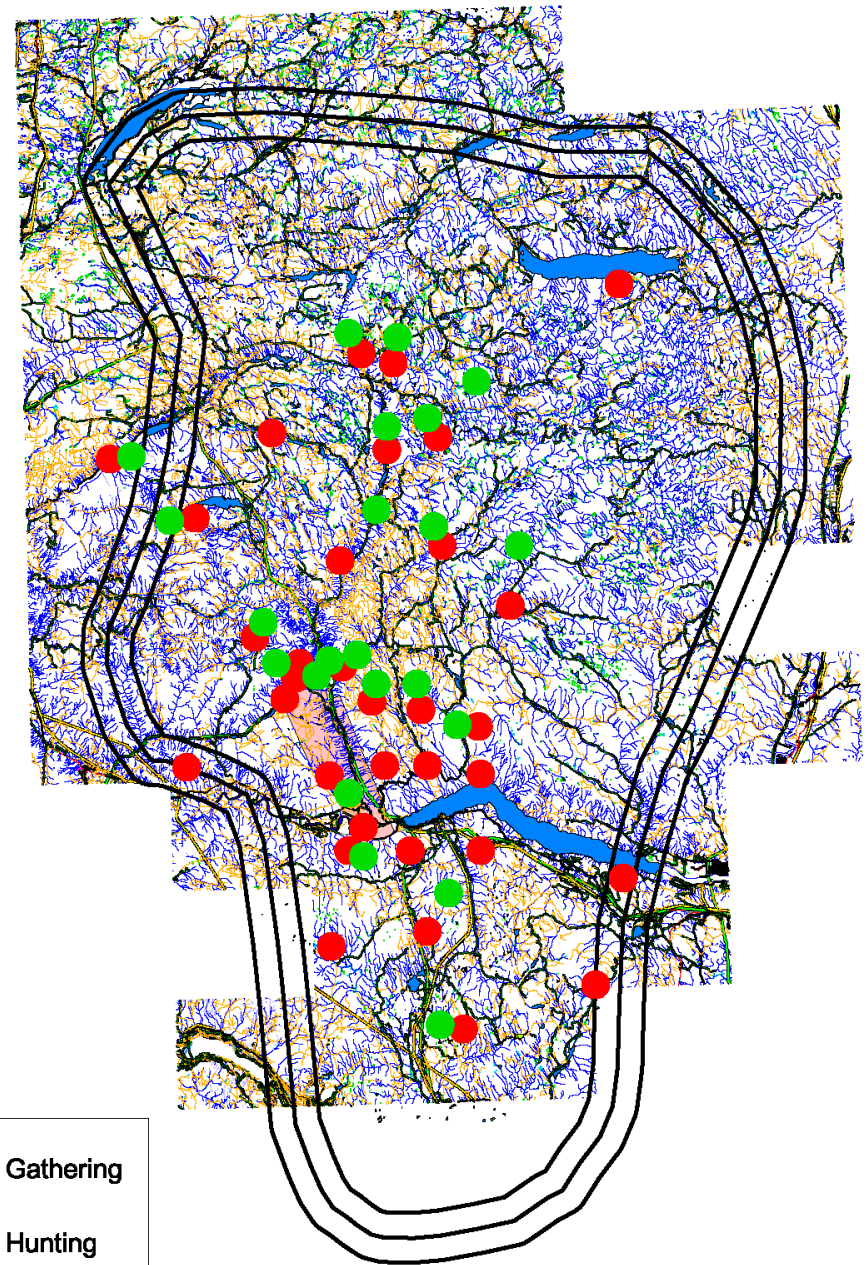
Cows Parsnip

Wild Pea

Carrots



www.skeetchestn.ca



Hunting and Gathering for Sustainability

Tea and Roots

7 types including

Labrador Tea

Hudson Bay Tea

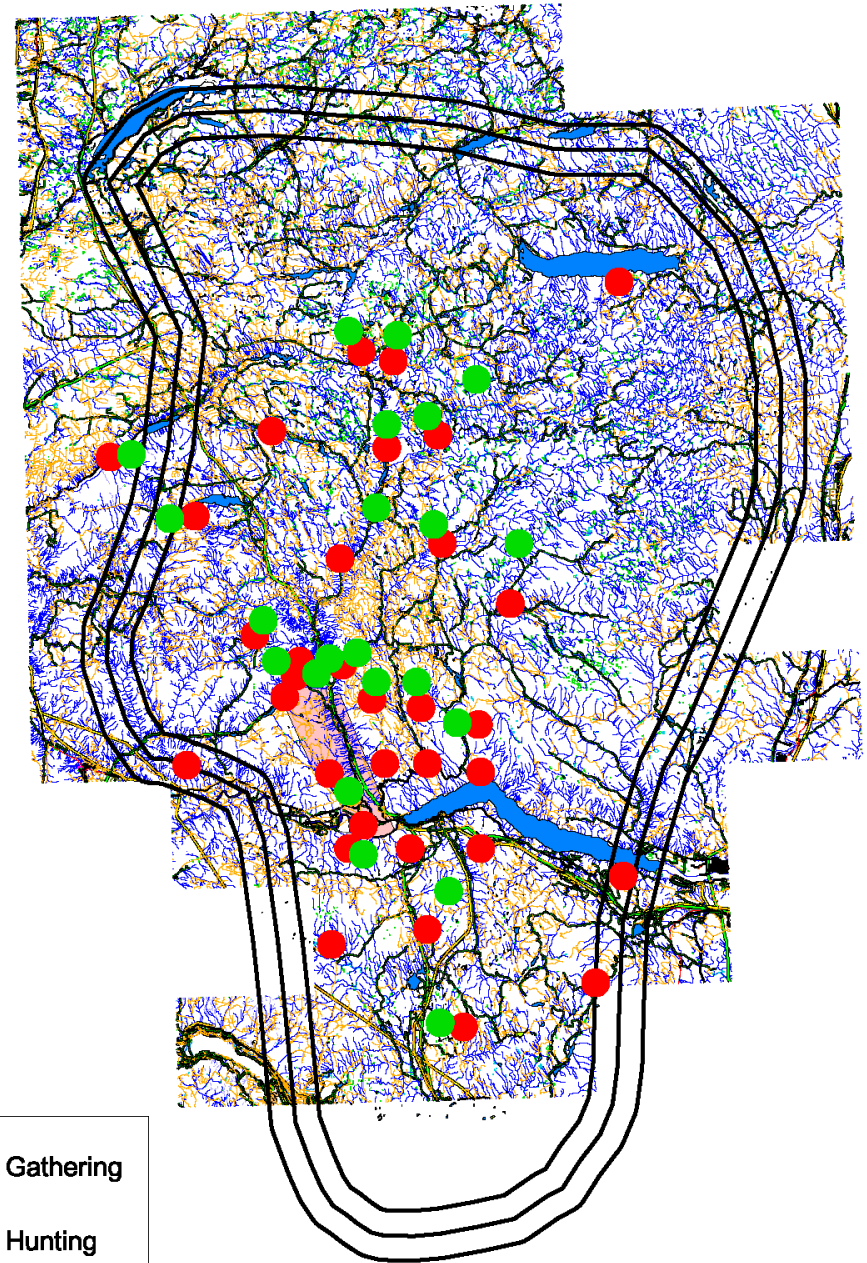
Rose Hip Tea

Mint Tea

Tiger Lily Bulbs

Balsam Bulbs

Bear roots



Hunting and Gathering for Sustainability

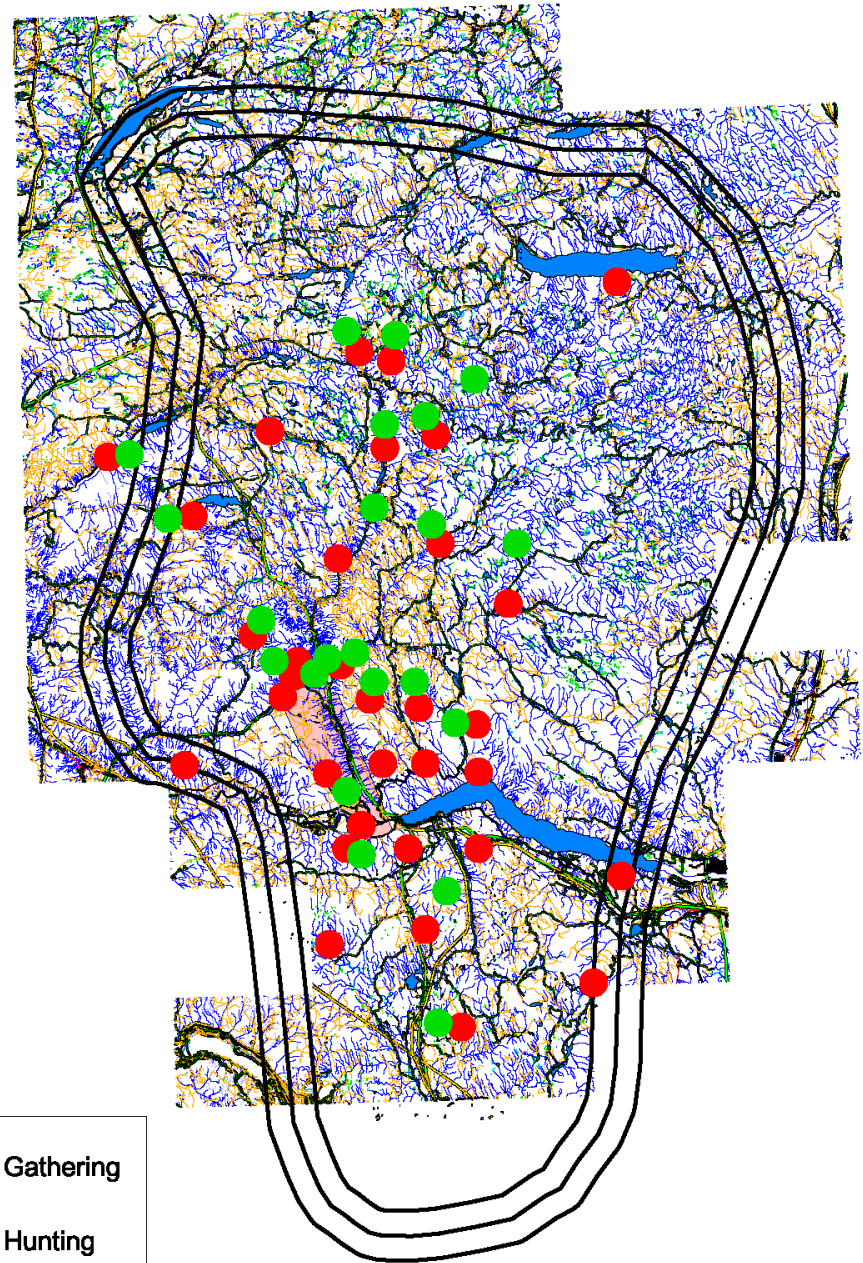
Medicines

32 types including

Kinnickinnick
Snowberries
Cactus
Spruce
Juniper Berries
Pineapple weed
Bitterroot
Yarrow
Princes Pine
Showy Aster
Oregon grape
Grouse Berry

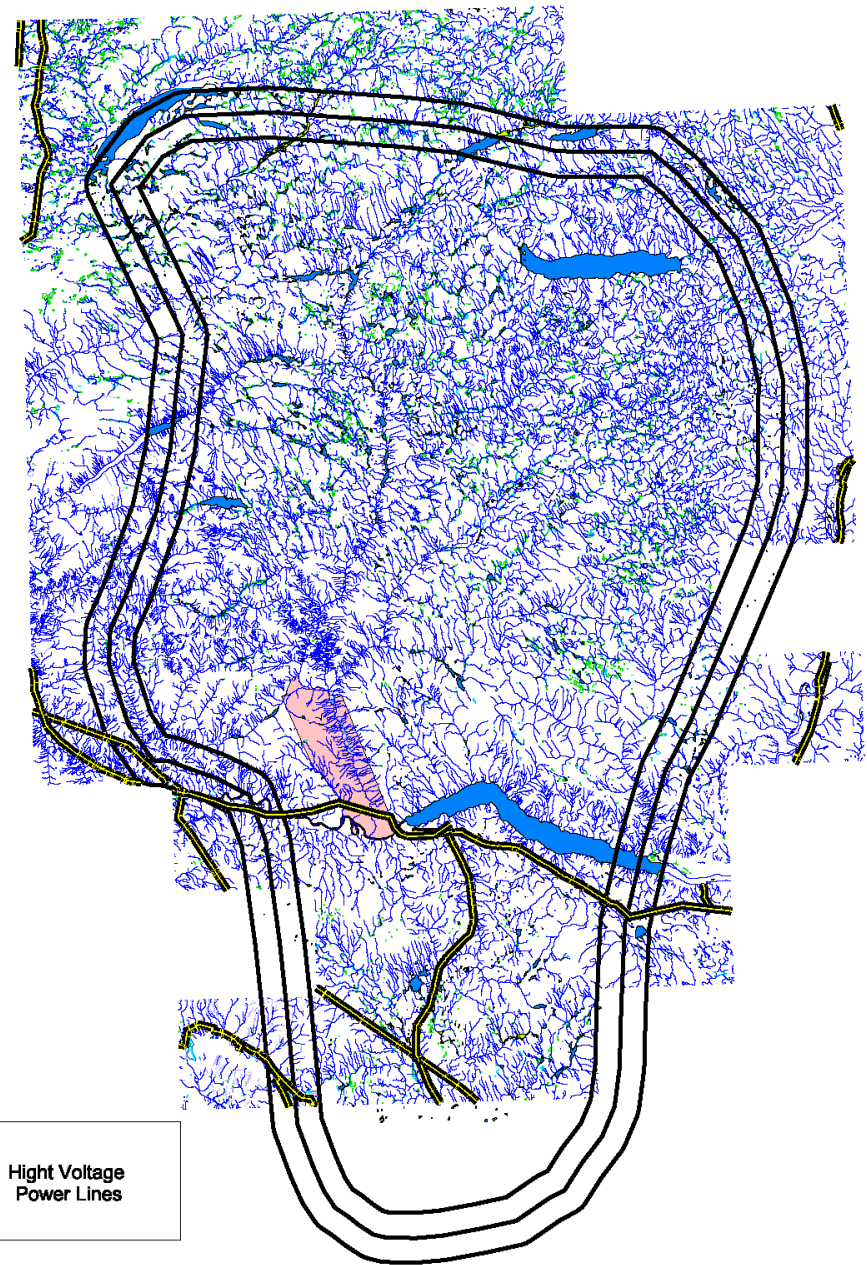


www.skeetchestn.ca



280+ Km Power Line *30 Sub Stations* *BC Hydro*

- Glyphosate
- Triclopyr
- 2,4-D
- Picloram
- Metsulfuron Methyl
- Dicamba
- Amitrole
- Chlorsulfuron
- Clopyralid
- Diuron
- Simazine
- Triclopyr
- Chondostereum purpureum



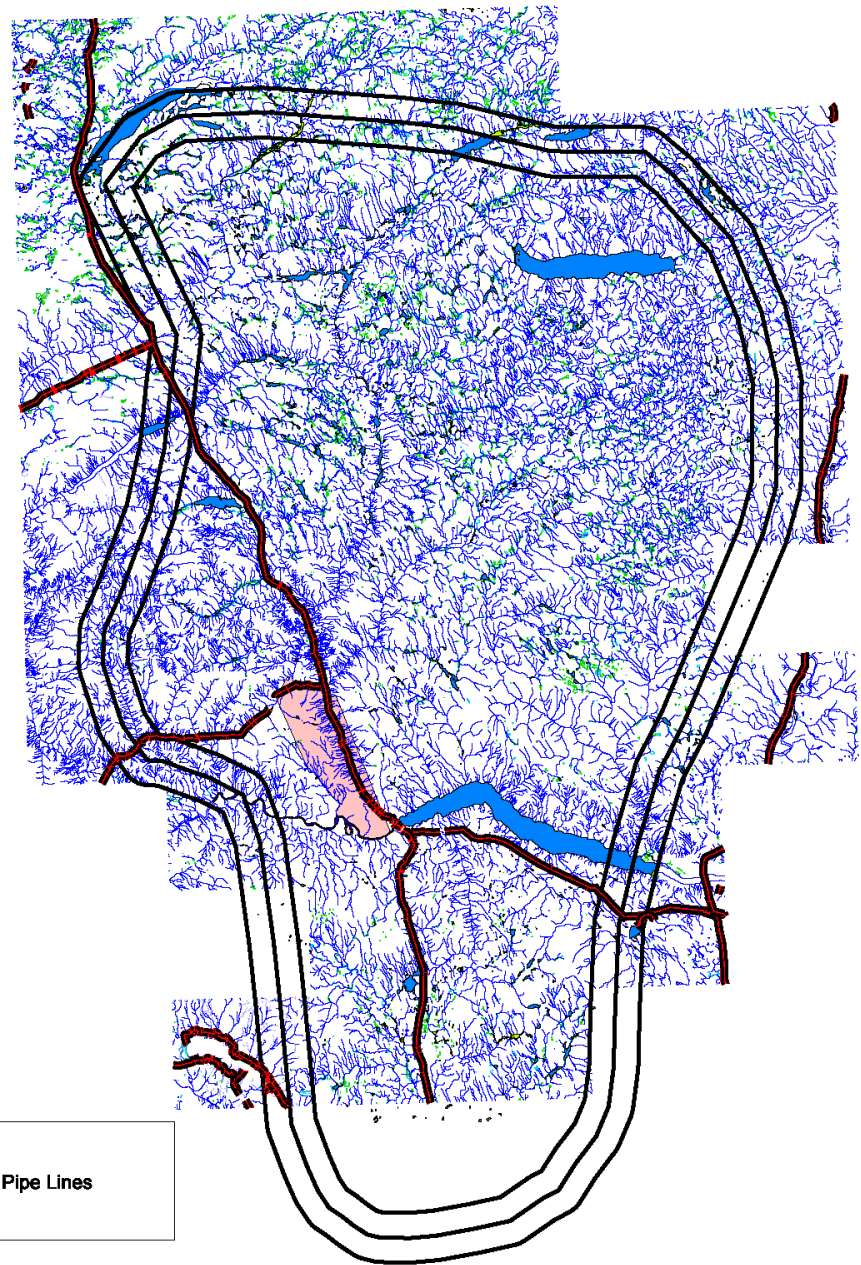
290 + Km Pipe Line
140 Storage Tanks
Duke Energy
/ Pembina

- Glyphosate
- Triclopyr
- 2,4-D
- Picloram
- Dicamba
- Amitrole
- Clopyralid
- Diuron
- Imazaphyr
- Metsulfuron Methyl

Terasen Gas

- Glyphosate
- Triclopyr

www.skeetchestn.ca

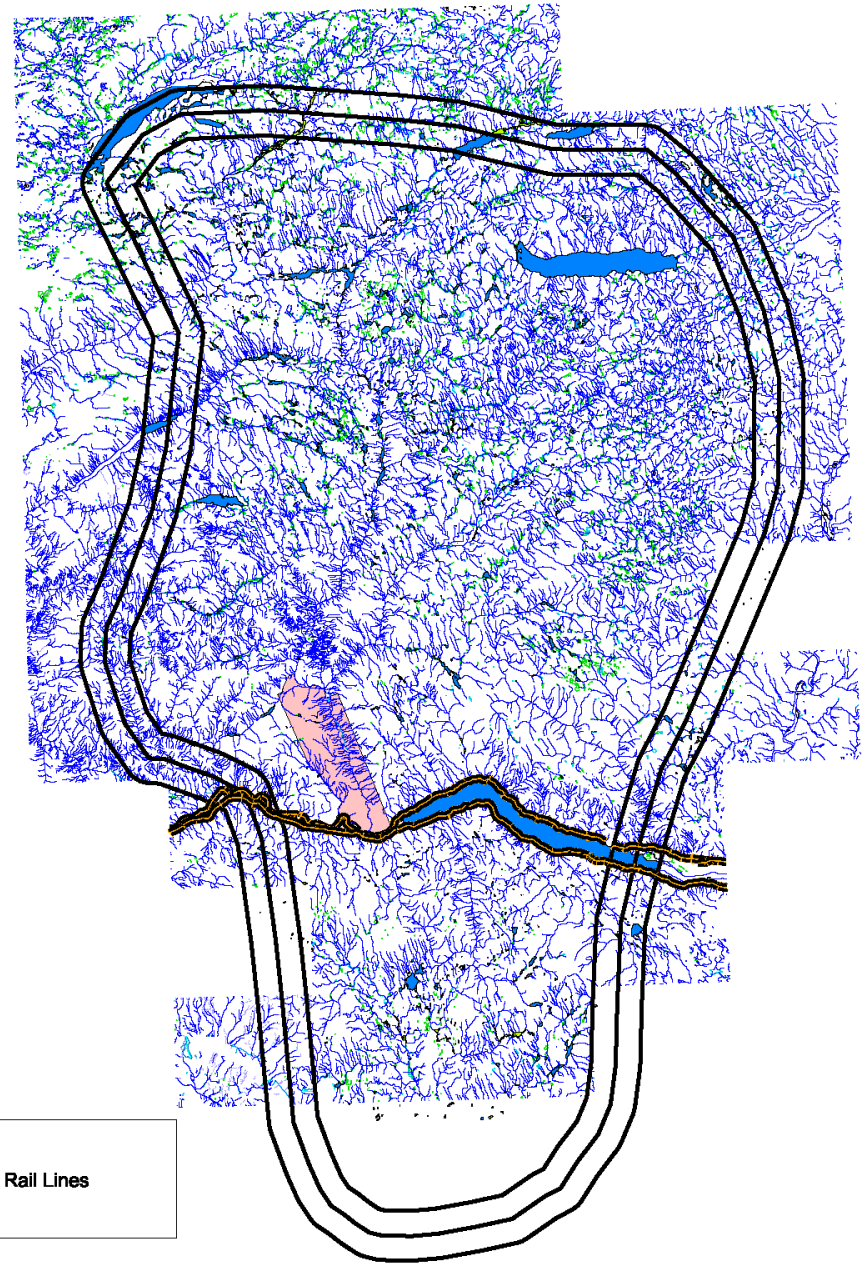


133 + Km Rail Line CNR

- Glyphosate *Triclopyr*
- 2,4-D *Picloram*
- Dicamba *Amitrole*
- Clopyralid *Diuron*
- Imazaphyr *Bromacil*
- Metsulfuron methyl

CPR

- Glyphosate *Dicamba*
- Amitrole *Bromacil*
- Imazaphyr *Diuron*
- Clopyralid *Chlorsulfuron*
- Triclopyr *Picloram*
- Metsulfuron Methyl
- 2,4-D

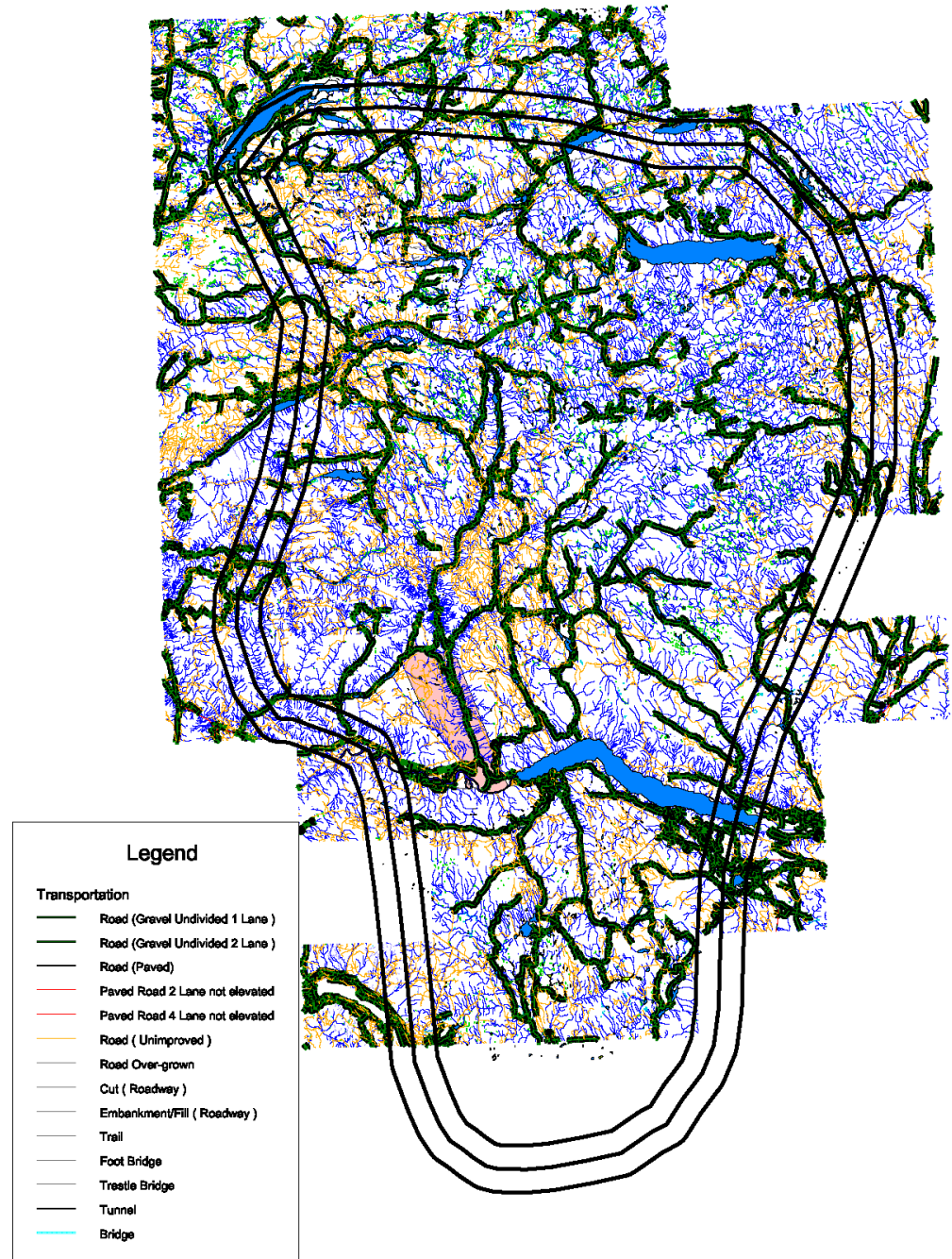


10,900+ Km Roads
7,800+ Km Logging &
Back Roads

Ministry of Forests, Highways, TNRD

- Glyphosate
- Clopyralid
- Escort (Metsulfuron Methyl)
- Tordon 22K
- Grazon
- Dyvel DS
- Surfactant
- Malathion (mosquito control)
- Foray 48B
- Roundup
- Glean
- Cupersea
- Altosid Methoprene

www.skeetchestn.ca



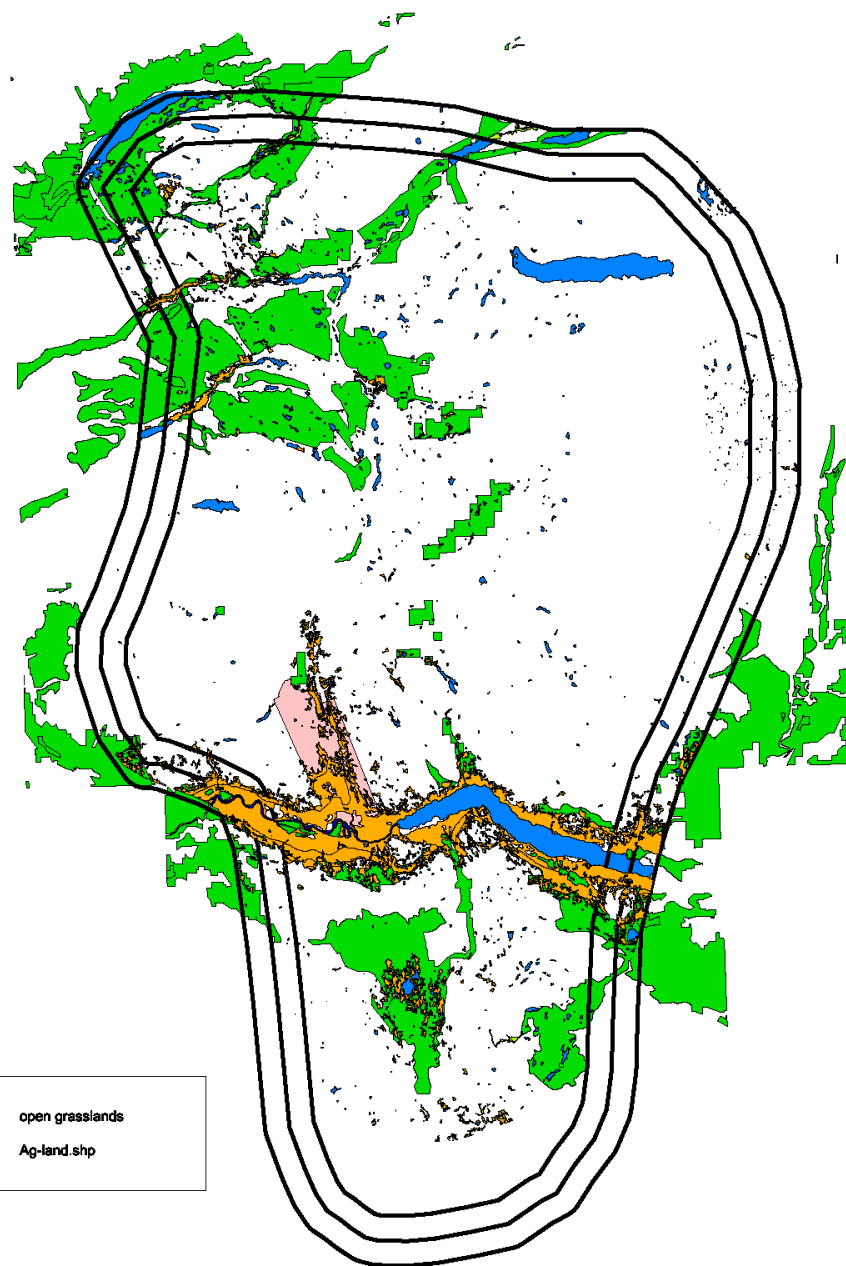
Agriculture

70,000 Ha in area



Grasslands

28,200 Ha in area



open grasslands
Ag-land.shp

Skeetchestn Environmental Food Contaminants Project



Skeetchestn Indian Band

First Nations Environmental Contaminants Program

Thank you for inviting use to participate in this workshop